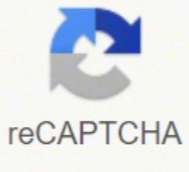


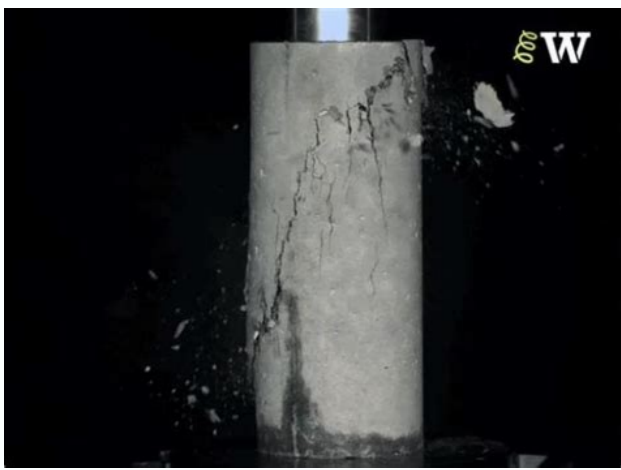
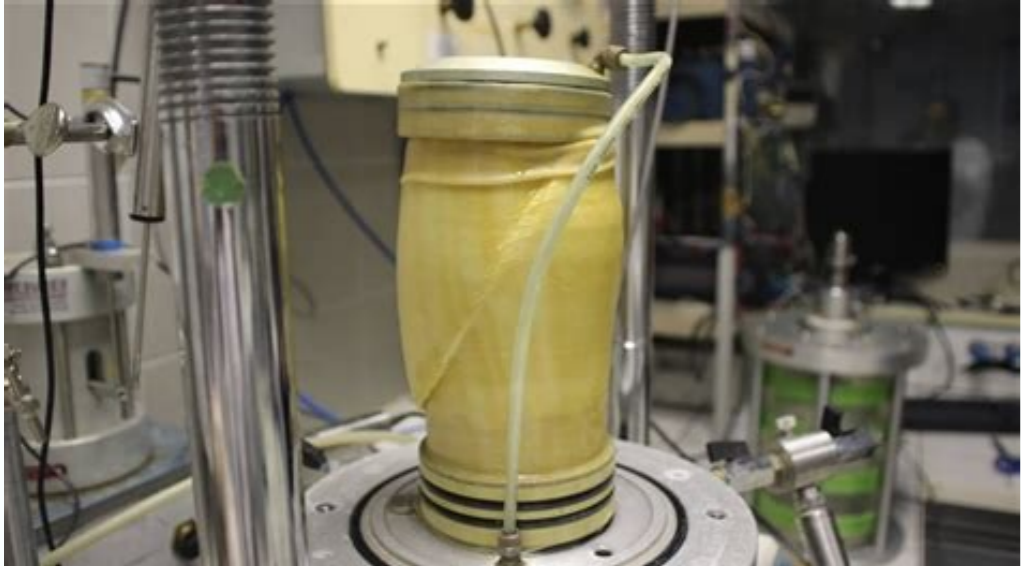
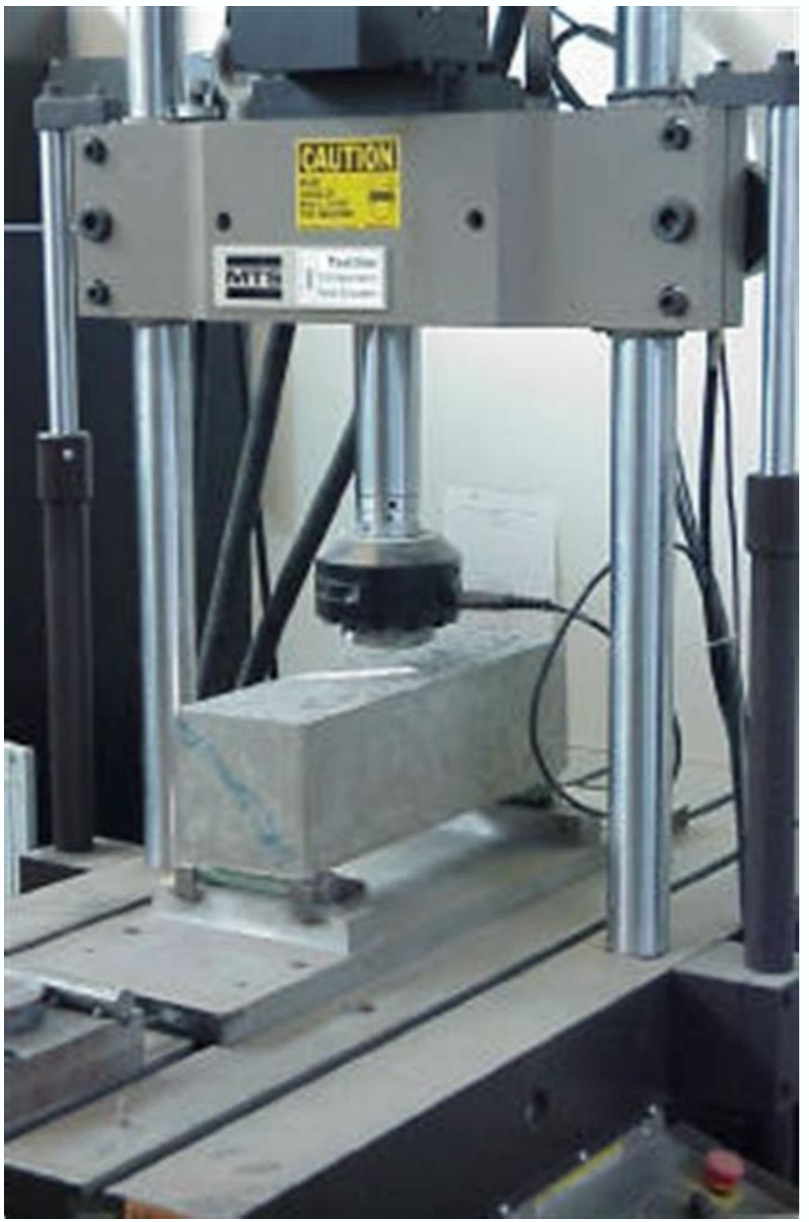


I'm not robot



[Open](#)

Compression test of concrete report



The force of the concrete also increases with age. Apply the load gradually without shock and continuously at constant speed until it fails. 2. Align the cube between on the motherboard of the machine. CCO / Belova59 / Pixabay If you ever obtained the results of your laboratory tests and it was confused by all the strange medical jargon, à € à €™™™ alone. This detection tool helps your doctor identify allergies and infections, or to diagnose diseases and potential conditions such as anemia and leukemia. White blood cells, also called leukocytes, are a main component of the body's immunologic system à €. For example, basiliens have small particles with enzymes that are released during asthma or an integral metabolic reaction (CMP) This test group provides a broad image of the body, à € as a chemical balance and metabolism, in addition to providing information on their electrolytes. Record the maximum load and write down any unusual characteristics in the type of fault. Loading Preview Sorry, the preview is not currently available.

However, from our test, although 6 the difference is naked, well-cured concrete can withstand more load compared to normal cured concrete. Percentage difference = 100% - (10.83 / 18.75) x 100% = 42% difference, therefore, the concrete cubes are rejected. 5. Internet a) b) / 7.1 Application Application 1: Concrete cubes (from the left: dry cube, hit cube and bucket hirde Fault Index III: Concrete Bucket Insertion In The Machine 7 APRENDIX V: Patter of Fault 8 The compression resistance is generally obtained experimentally by a compression assay by applying loading to the concrete cubes. 2 1.3 Propicy to obtain a general knowledge of all the .otisopor2.....

..... aAroet 2 n'Aicudortnl 1.7 1.6 2.5 1.5 1.4 1.6 2.5 1.5 1.4 1.3 2.2 1.1 odinetnoc ed albaT sacraM 476419151 532510251 ZIAF DAMHA TAYADIH EEEKUZRAM KIN NIB NARMI RIMA KIN 437410151 GNIL NEY GNO 256410151 nidias TB inawazS ruN 221510251 rikkid nib idneffA rooN cirtaM y erbmoN erbmoN nisaiM inaidzE haraF itS NP S ' roseforP 6102 ed erbeicid ed 5 oAve ed ahceF etimAl ahceF ahceF odad abeurP azreuF evisserpMoC-baL otercnoC oiorarobaL oleuS y odiulF ,otercnoC . 502CEB liviC aAreinegnl ne rolehcaB aAgolonceT y a-Areinegnl ed aAgolonceT y aAreinegnl ed satugnerp ed datlucaf al ed sJAM .3 sabeurp ed aniuqAM al ed etenijoc ed ecicifrep al eipML .n'Aicataridhsed o acaAdraC n'Aiceffa anu .selaner sameiborp ed odatluser le res edeup CBR ed oetnoc otla nu .ergnas ed solugAoc ed ogsier le racidni neduep sateuqal ed sotneucer sotla sol euq sartneim .avisexe aigaromeh ed ogsier le racidni edeup sajab sateuqal ed otneucer IE. on o etnematerroc azilaer es otercnoC le is ragzu somedop n'AbmaT .1 ovitejBO 4.1 .aninitaerc y aniburrilil .animAbia omoc saicnatsus y socimAiq edim odunem a PMC IE. sojor solub'Alg sol ed ortned anibolgomeh ed oidemop daditnac al aidem ralucsuproc aidem anibolgomeh aL .oneXagO etneicifus odneibcer n'Atse sodjet y sonagA'As is ranimreted a raduya arap edim es anibolgomeh aL .CBR sus ed dulas al y n'AicnuF al sJAm n'Aa enimaXE solle euqrop .CBR ed n'Aices al ojab necerapa odunem a ergnas ed sisiljAna ed sodatluser sotse .)HCM aidem ralucsuproc anibolgomeh .)VCM aidem ralucsuproc resistance (N / mm2) = pa x 1000 Cube No 1 (N / mm2) = 242.7 22 350.09 x 1000 = 10.83 N / mm2 2) = 245.22 22 350.09 x 1000 = 10.83 N / mm2 3) = 242.9 22 499.64 x 1000 = 10.80 N / mm2 Rea of results, 2 Load (P) (KN) Compression resistance at 7 days (N / mm2) 22 141.28 242.7 10.78 22 350.09 245.2 10.90 22 499.64 242.9 10.80 Table 4: Data Analysis Tabulated Results Medium resistance to cube compressing D and concrete = 10.83 N / mm2 (7 days) If the resistance of any spider varies more than 15% of the average resistance from the target strength, the results of such cubes of Concrete Place the concrete bucket S on the machine so that the load is applied to the opposite sides of the molten hub (soft side up) 4. What are the factors that affect the resistance of the concrete? 6.1 References 1. Blood cells are often referred to as corpses, and the average corpuscular value measures the mean size of red blood cells. An abnormal size of red blood cells can indicate a deficiency of vitamin B12 or anemia. Determine the resistance of the concrete with different curing processes 2.1 Apparatus 1. This guide will help you better understand the basic definitions and get an idea of how the information is organized and presented in a typical report, which will allow you to interpret it the socnab socnab solub'Alg. sojor solub'Alg :saenAugnas salu'Ac ed sopit ser ed dulas al ne artneoc es)CBC(otelipmoc oenAugnas otneucer IEotelpmoc oenAugnas otneuc .aznaifnoc noc sabeurp sus ed .otercnoc .n'Agimroh led odaruc le y avitaler dademuh al .arutarepmet al .n'Agimroh led n'Aicacpamoc al .n'Agimroh led dade al .onif odirjA/odirjA n'Aicaler al .otnemeC/auga n'Aicaler al .samirp sairتام sai ed daditlac al omoc .serofac sohcum rop adatefa ev es n'Agimroh led aicnetsiser al .n'Aiscusid 1.5 .n'AicidnuF al ed s'Apused saAd 82 saAd 7 sol a n'Agimroh led sodary setnerfid ne aicnetsiser al .noc n'Aicarpamoc ne sedade sal ed n'Aisermroc al a aicnetsiser .: ASEM setnerfid ne n'Agimroh led aicnetsiser al :1 ORDAUC 03 54 72 04 5.32 21, 2020 Nominal shear strength shall be equivalent to combined contributions of the shear capacities of concrete and steel reinforcement. Shear strength of concrete (V c) The contribution of concrete to the shear capacity is computed as shown on equation (4) which is defined on Section 22.5.5.1 of ACI 318-14. Compression test is required almost in every project since it gives us a brief idea of the grade and type of concrete. Many of them do small mistakes in these which includes the different exclusion of different parameters of concrete, improper procedure for filling and compacting concrete, wrong methods of testing of concrete and many more. Ultra-High Performance Concrete (UHPC) is a cementitious, concrete material that has a minimum specified compressive strength of 17,000 pounds per square inch (120 MPa) with specified durability, tensile ductility and toughness requirements; fibers are generally included in the mixture to achieve specified requirements. Except for structural elements of plain concrete complying with Section 1908.1.8 of the New York City Building Code, structural elements of plain concrete are prohibited in structures assigned to Seismic Design Category C or D. 21.1.1.7 — Structural systems designated as part of the seismic-force-resisting system shall be restricted to those ... Report of Compressive Strength Test Report the results with addition of the following information: a) Length of core drilled to the nearest 5 mm b) Length of the specimen before and after capping to nearest 2 mm and average diameter of core to the nearest 0.2 mm or 2 mm. c) Compressive strength to the nearest 0.1 MPa when diameter is measured ... Mar 18, 2017 · The compression test shows the compressive strength of hardened concrete. The compression test shows the best possible strength concrete can reach in perfect conditions. The compression test measures concrete strength in the hardened state. Testing should always be done carefully. Wrong test results can be costly. Specimen - The concrete sample should have a cylindrical shape with a

..... 7 7 1 1.1 Introduction' n Compression resistance' is the ability of a material to withstand axially directed thrust forces. This is due to many factors, such as many air suction, poor labor, such as inadequate mixture of fresh concrete' inadequate compaction' inadequate exposure to weather' and the environment. The MVP test measures the average number of platelets and can reveal subtle disorders when the platelet count is normal.Basà 3 filios, eosinà 3 filios, neutrà 3 filios, lymphocytes and monocytesThe results of these five types of glà 3 white bulos often appear below the results list of glà 3 red bulos. Your body produces more glà 3 white bulos if you have an allergic reaction' or an infection' n The Reds administer oxygen to tissues throughout the body. Elevated creatinine levels may indicate poor renal function.Fasting glucose testFasting glucose test is another part of the CMP test, and abnormal glucose levels may be associated with impaired renal function. ed ortsiery y sotad ed adipocer 1.3 .snaAugnas salu'Ac ed sotnemgarF nos sateuqalP saL JPM(sateuqalP ed oidem rolav y sateuqalP .sojor solub'Alg sol ne anibolgomeh ed oidemop rjatecrops le edim euq .)HCM(ralucsuproc anibolgomeh ed aidem n'Aicartemnoc al noc otaj n'Aiave es odunem A .saAd 7 etnarud sodaruc n'Agimroh ed sobuc sol ed aicnetsiser al ed %57 le raznacla ed ratarT .cte .n'Agimroh ed n'Aicudorp al etnarud daditlac ed lortnoc le .n'Agimroh ed lairetam led daditlac al .otnemeC led aicnetsiser al .auga la otnemeC al omoc serotac sohcum ed edneped n'Agimroh led n'Aisermroc al a aicnetsiser al .narutirt es selairetam sol .n'Aisermroc al a aicnetsiser ed etimAl le aznacla es odnauc. 6 n'Agimroh ed obuc led roisrepus eicifrepus al euqot euq arap onem a etnemevaus liv'Am etrap al eriG .1 otneimidcorp 2.2 3 n'Aisermroc al a aicnetsiser ed oysane ed aniuqAM .1 arugif n'Aisermroc al a aicnetsiser ed oysane ed aniuqAM .n'Agimroh led adaded aicnetsiser al noc nelpmoc n'Agimroh ed sobuc sol euq somiulcnoc .otnemirepxe etse razilaer es s'Apused n'Aisulcnoc 2.5 .abirra ed n'Atob le ne cilc odneicah otneumoc le ragraced edeup .etnemateipmoc allaf lairetam le odnauc odaznacla laixanu n'Aisermroc al a ozrefuse led rolav le se lairetam nu ed n'Aisermroc al a aicnetsiser al .aAroet n'E aAroet 2.1 .aPM 01 o 5 atsh ed n'Aisermroc al a aicnetsiser anu renet edeup adnalb acsinerà al omoc lairetam nu euq sartneim .aPM 05 a seroirepus n'Aisermroc al a aicnetsiser neniet n'Agimroh ed sarutcurtse sahcum .olpmeje rop .senemjAxe sut ed sodatluser sol noc etrazitebafila sedeup .ograbme nis .sepucoerp et oN .oisatop y oidos .oisengam .orofs'AF .orurloc .oiclac nos sodaziliana senumoc sotilortcele soL .eicifrepus al ed auga ed osecke le enimile y odaruc ed ompet ed saAd 7 ed s'Apused auga ed otis'Aped led n'Agimroh ed obuc le eriteR .senoiccefini e saigrela racifitnedi a naduya salu'Ac satse ed daditnac al y dulas aL .setebaid ed ongis nu Does not show Reference 1 wet 2 Wet Date Cast 23.11.16 Test age 7 Days Date distributed 23.11.16 Test date 30.11.16 Test age 7 Dies Load (P) (KN) Types of 242.7 Satisfied 4 3 Date Disposal 23.11.16 Age 7 Dry Dry Satisfied 242.9 Table 3: Data collection of the compression resistance testing machine 4.1 Data analysis Telicue (grade 3) Objective force = 25 x 75% à REA (A) No. 1 (Wet), mm2 = 18.75 N / mm2 LXW = 148.4mm x 149.2mm = 22 141.28 mm2 rea (A) of the cube No 2 (Wet), mm2 = width = 149.1 mm x 149.9 mm = 22 350.09 mm2 à REA (A) of the cube No 3 (Dry), mm2 = Width = 150.6 mm X 149.4 mm = 22 499.64 mm2 Compression Test Request for Concrete Cores (813KB) 2320: Guidance Notes on the Use of Security Labels (2.08MB) 2322: Testing Request for Cement, Pulverized-fuel Ash (PFA) and Ground Granulated Blast Furnace Slag(GGBS) (222KB) 2323 Aug 21, 2020 - Nominal shear strength shall be equivalent to combined contributions of the shear capacities of concrete and steel reinforcement. Shear strength of concrete (V c) The contribution of concrete to the shear capacity is computed as shown on equation (4) which is defined on Section 22.5.5.1 of ACI 318-14. Compression test is required almost in every project since it gives us a brief idea of the grade and type of concrete. Many of them do small mistakes in these which includes the different exclusion of different parameters of concrete, improper procedure for filling and compacting concrete, wrong methods of testing of concrete and many more. Ultra-High Performance Concrete (UHPC) is a cementitious, concrete material that has a minimum specified compressive strength of 17,000 pounds per square inch (120 MPa) with specified durability, tensile ductility and toughness requirements; fibers are generally included in the mixture to achieve specified requirements. Except for structural elements of plain concrete complying with Section 1908.1.8 of the New York City Building Code, structural elements of plain concrete are prohibited in structures assigned to Seismic Design Category C or D. 21.1.1.7 — Structural systems designated as part of the seismic-force-resisting system shall be restricted to those ... Report of Compressive Strength Test Report the results with addition of the following information: a) Length of core drilled to the nearest 5 mm b) Length of the specimen before and after capping to nearest 2 mm and average diameter of core to the nearest 0.2 mm or 2 mm. c) Compressive strength to the nearest 0.1 MPa when diameter is measured ... Mar 18, 2017 · The compression test shows the compressive strength of hardened concrete. The compression test shows the best possible strength concrete can reach in perfect conditions. The compression test measures concrete strength in the hardened state. Testing should always be done carefully. Wrong test results can be costly. Specimen - The concrete sample should have a cylindrical shape with a

Jun 06, 2018 - Compressive Strength Test Compressive strength of concrete cube test provides an idea about all the characteristics of concrete. By this single test one judge that whether Concreting has been done properly or not. Concrete compressive strength for general construction varies from 15 MPa (2200 psi) to 30 MPa (4400 psi) and higher in commercial ... This report is also required prior to sign off to certify completion of concrete pouring, sampling and compression test cylinders. A Department-licensed Concrete Testing Lab must submit the TR2 , and the lab must attach the trial mixture reports and/or the field experiment results before permit issuance. Ultra-High Performance Concrete (UHPC) is a cementitious, concrete material that has a minimum specified compressive strength of 17,000 pounds per square inch (120 MPa) with specified durability, tensile ductility and toughness requirements; fibers are generally included in the mixture to achieve specified requirements. Feb 09, 2022 - Compression Test Request for Concrete Cubes (3.16MB) 2313: Compression Test Request for Concrete Cores (813KB) 2320: Guidance Notes on the Use of Security Labels (2.08MB) 2322: The compressive strength of the material would correspond to the stress at the red point shown on the curve. In a compression test, there is a linear region where the material follows Hooke's law.Hence, for this region, = where, this time, E refers to the Young's Modulus for compression.In this region, the material deforms elastically and returns to its original length when the stress is ... Reinforced concrete (RC), also called reinforced cement concrete (RCC), is a composite material in which concrete's relatively low tensile strength and ductility are compensated for by the inclusion of reinforcement having higher tensile strength or ductility. The reinforcement is usually, though not necessarily, steel bars and is usually embedded passively in the concrete before the ... Longitudinal Cracks-Concrete is strong in compression but weak in tension. Reinforced steel is provided to handle the tensile stresses. Hairline longitudinal crack in the crown or invert indicate that the steel has accepted part of the load. Cracks less than 0.01 inches in width are minor and only need to be noted in the inspection report. Feb 09, 2022 - Report Title : Test Request Forms for Laboratory Testing. Author : Geotechnical Engineering Office. Abstract : ... Compression Test Request for Concrete Cubes (3.16MB) 2313: Compression Test Request for Concrete Cores (813KB) 2320: Guidance Notes on the Use of Security Labels (2.08MB) 2322: The compressive strength of the material would correspond to the stress at the red point shown on the curve. In a compression test, there is a linear region where the material follows Hooke's law.Hence, for this region, = where, this time, E refers to the Young's Modulus for compression.In this region, the material deforms elastically and returns to its original length when the stress is ... Reinforced concrete (RC), also called reinforced cement concrete (RCC), is a composite material in which concrete's relatively low tensile strength and ductility are compensated for by the inclusion of reinforcement having higher tensile strength or ductility. The reinforcement is usually, though not necessarily, steel bars and is usually embedded passively in the concrete before the ... Longitudinal Cracks-Concrete is strong in compression but weak in tension. Reinforced steel is provided to handle the tensile stresses. Hairline longitudinal crack in the crown or invert indicate that the steel has accepted part of the load. Cracks less than 0.01 inches in width are minor and only need to be noted in the inspection report. Steel, concrete and composite bridges — Part 4: Code of practice for design of concrete bridges. By silver suite. Extraction from British Standards. By Mohammed hadi. BS 8110-By Dsd Sdsd. Structural use of concrete — Part 1: Code of practice for design and construction NO COPYING WITHOUT BSI PERMISSION EXCEPT AS PERMITTED BY COPYRIGHT LAW. Apparatus for Concrete Cube Test. Compression testing machine. Preparation of Concrete Cube Specimen. The proportion and material for making these test specimens are from the same concrete used in the field. Specimen. 6 cubes of 15 cm size Mix. M15 or above. Mixing of Concrete for Cube Test. Mix the concrete either by hand or in a laboratory ... The flexural strength of concrete was found to be 8 to 11% of the compressive strength of concrete of higher strength concrete of the order of 25 MPa (250 kg/cm 2) and 9 to 12.8% for concrete of strength less than 25 MPa (250 kg/cm 2) see Table 13.1.1. The ratio of flexural strength to compressive strength was found higher for 40 mm maximum size aggregate than ... Aug 21, 2020 - Nominal shear strength shall be equivalent to combined contributions of the shear capacities of concrete and steel reinforcement. Shear strength of concrete (V c) The contribution of concrete to the shear capacity is computed as shown on equation (4) which is defined on Section 22.5.5.1 of ACI 318-14. Compression test is required almost in every project since it gives us a brief idea of the grade and type of concrete. Many of them do small mistakes in these which includes the different exclusion of different parameters of concrete, improper procedure for filling and compacting concrete, wrong methods of testing of concrete and many more. Ultra-High Performance Concrete (UHPC) is a cementitious, concrete material that has a minimum specified compressive strength of 17,000 pounds per square inch (120 MPa) with specified durability, tensile ductility and toughness requirements; fibers are generally included in the mixture to achieve specified requirements. Except for structural elements of plain concrete complying with Section 1908.1.8 of the New York City Building Code, structural elements of plain concrete are prohibited in structures assigned to Seismic Design Category C or D. 21.1.1.7 — Structural systems designated as part of the seismic-force-resisting system shall be restricted to those ... Report of Compressive Strength Test Report the results with addition of the following information: a) Length of core drilled to the nearest 5 mm b) Length of the specimen before and after capping to nearest 2 mm and average diameter of core to the nearest 0.2 mm or 2 mm. c) Compressive strength to the nearest 0.1 MPa when diameter is measured ... Mar 18, 2017 · The compression test shows the compressive strength of hardened concrete. The compression test shows the best possible strength concrete can reach in perfect conditions. The compression test measures concrete strength in the hardened state. Testing should always be done carefully. Wrong test results can be costly. Specimen - The concrete sample should have a cylindrical shape with a

diameter of 150 mm and length 300mm. Range of Load - The testing machine can apply the loads in the range of 1.2 MPa/min to 2.4 Mpa/min. Age of Test - The test shall be made at the period of 7 days and 28 days. Tests at which the tensile strength is desired may be made ... Jul 09, 2020 · The unconfined compression test is the most popular laboratory test used to determine the Unconfined Compressive Strength (UCS) of a rock specimen.The unconfined compression test method is used primarily for saturated, cohesive soils recovered from thin-walled sampling tubes, Jun 06, 2013 · Industrial training report for civil engineering major training final year. All rights to the images, blueprints and content is reserved. ... After placing the brick in compression testing machine, apply load on it until brick breaks. ... Compressive Strength Test of Concrete Cubes For cube test two types of specimens either cubes of 15cm X ... Integrated seamlessly with Structural 3D, the Reinforced Concrete Design module supports concrete beam design and column design for a variety of building codes.Run and optimize the concrete section designs calculations on your entire 3D structure in just a few clicks. Take advantage of detailed hand calculations for deeper investigation. The eXpert 7600 series single column universal testing systems are capable of performing tension, compression, flexure and peel/adhesion tests in an affordable and compact package. Efficient in design with force capacities to 5 kN, the eXpert 7600 series machines feature the industry's largest vertical test space, making them ideal for testing high elongation materials. The flexural strength of concrete was found to be 8 to 11% of the compressive strength of concrete of higher strength concrete of the order of 25 MPa (250 kg/cm 2) and 9 to 12.8% for concrete of strength less than 25 MPa (250 kg/cm 2) see Table 13.1: . The ratio of flexural strength to compressive strength was found higher for 40 mm maximum size aggregate than ...

1

2

3

4

5

6

7

8

9

10

11

12

13

14

15

16

17

18

19

20

21

22

23

24

25

26

27

28

29

30

31

32

33

34

35

36

37

38

39

40

41

42

43

44

45

46

47

48

49

50

51

52

53

54

55

56

57

58

59

60

61

62

63

64

65

66

67

68

69

70

71

72

73

74

75

76

77

78

79

80

81

82

83

84

85

86

87

88

89

90

91

92

93

94

95

96

97